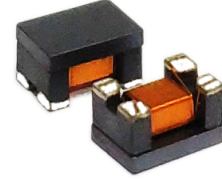


## Common Mode Filters

For automobile signal line



### FEATURE

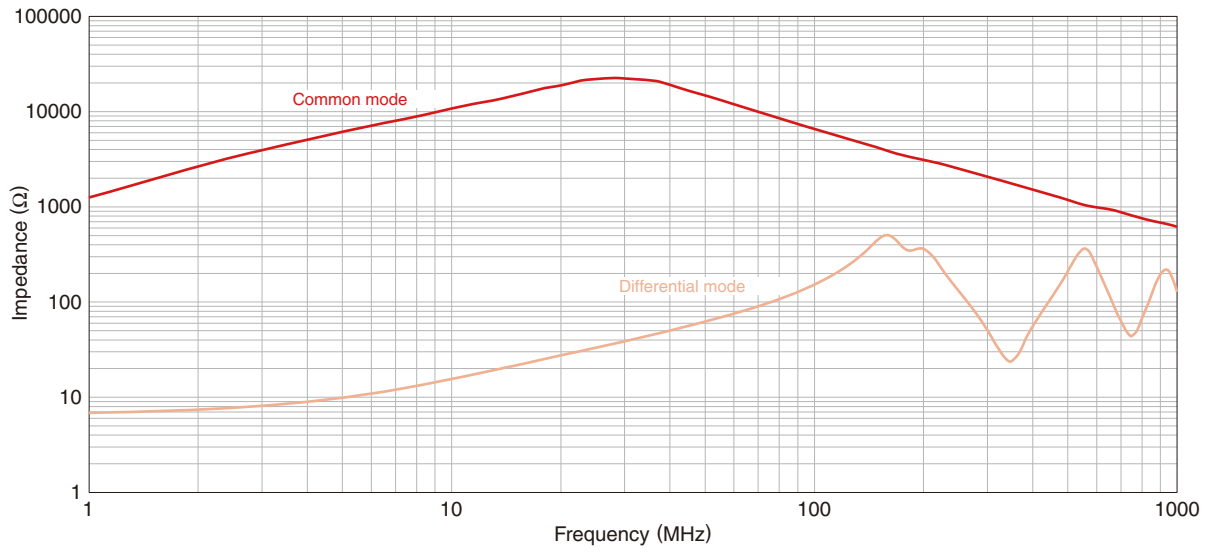
- Compatible with an operating temperature range of -40 to +105°C, so can be used for vehicle devices requiring compatibility with high temperatures.
- When mounting, the terminal and winding tape splicing part do not fuse.
- Which uses our unique technology, is a product that can achieve DCR < 5Ω @ 125 deg. C by reducing the DC resistance while maintaining a high L-value of 200μH.

### APPLICATIONS

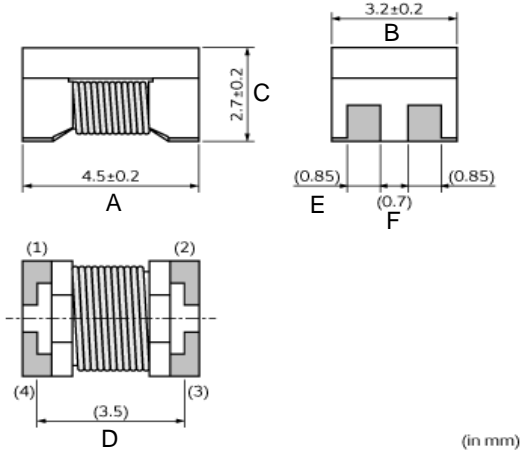
- Ethernet system.

STANDARD ELECTRICAL SPECIFICATIONS					
PART NUMBER	Common mode inductance [100KHz] (μH)+50/-30%	Rated voltage (V)max.	Rated current (mA)max.	DC resistance (Ω)max.	Insulation resistance (MΩ)min.
CMF2SMFWI201K	200	50	100	4.5	10

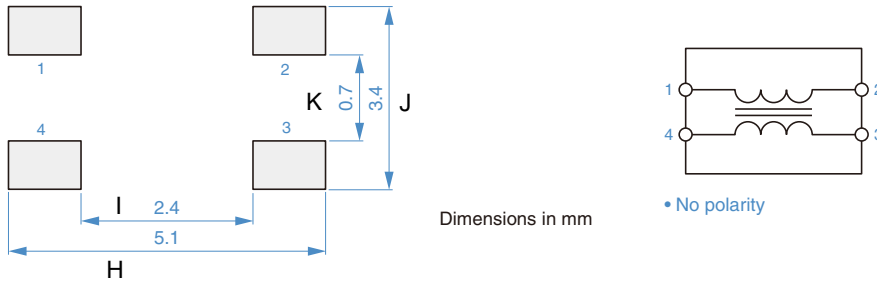
## PERFORMANCE GRAPHS: INDUCTANCE AND Q VS. FREQUENCY



## DIMENSIONS in inches [millimeters]



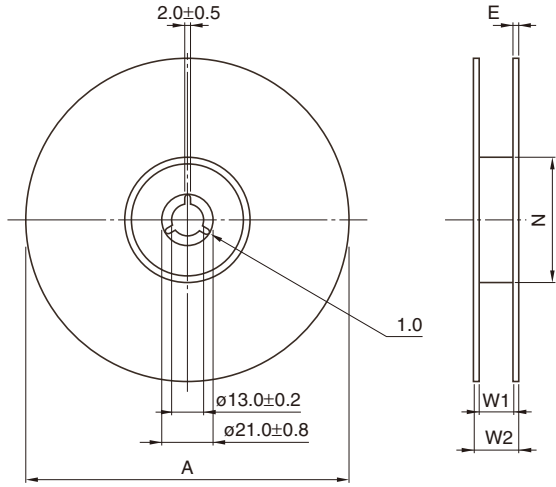
PART NUMBER	A	B	C	D	E	F
CMF2SMFWI201K	0.177 ± 0.008 [4.5 ± 0.2]	0.126 ± 0.008 [3.2 ± 0.2]	0.106 ± 0.008 [2.7 ± 0.2]	0.138 [3.5]	0.033 [0.85]	0.028 [0.7]



PART NUMBER	H	I	J	K
CMF2SMFWI201K	5.1	2.4	3.4	0.7

## PACKAGING STYLE

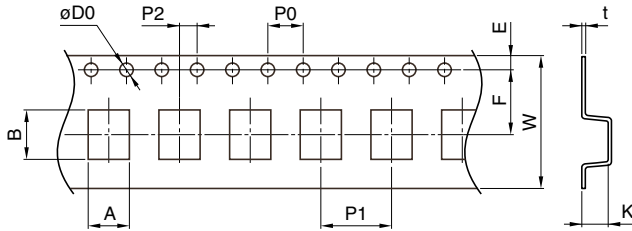
### REEL DIMENSIONS



A	W1	W2	N	E
ø330±2	13.5±0.5	17.5±1	100±1	2 typ.

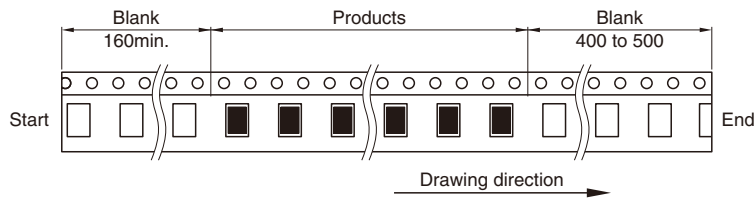
Dimensions in mm

### TAPE DIMENSIONS



Dimensions in mm

A	B	øD0	E	F	P0	P1	P2	W	K	t
3.6±0.1	4.9±0.1	1.55±0.05	1.75±0.1	5.5±0.05	4.0±0.1	8.0±0.1	2.0±0.05	12.0±0.2	3.05±0.1	0.3±0.05



Dimensions in mm

Quantity Per Reel : 500 pcs